

**CHAPTER**

**36**

**PNEUMATIC**

CESSNA®  
**MODEL 208**  
ILLUSTRATED PARTS CATALOG

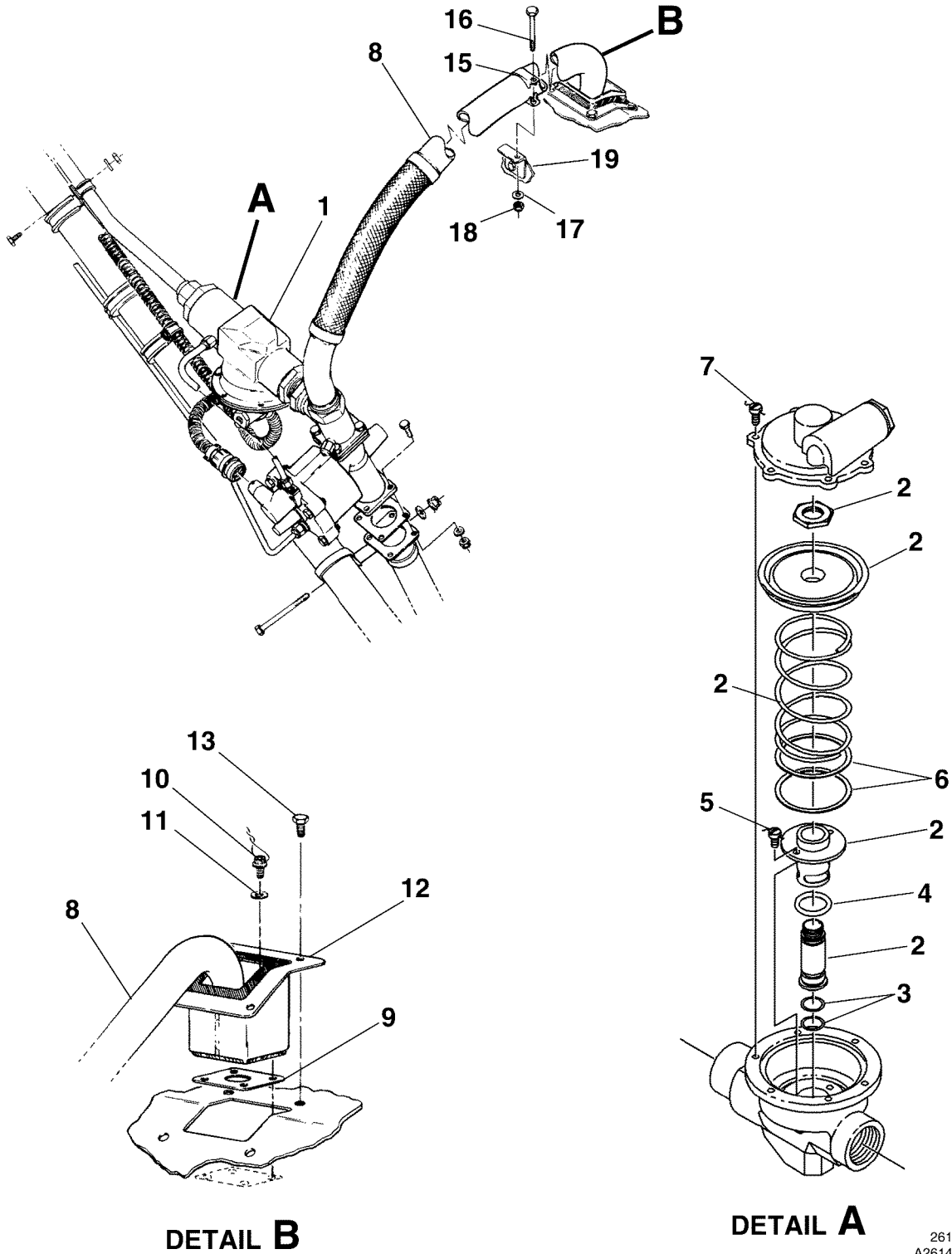
<u>CHAPTER SECTION SUBJECT</u>		<u>NUMBER OF PAGES</u>	<u>DATE</u>
36 - TITLE			
36 - LIST OF EFFECTIVE PAGES			
36 - RECORD OF TEMPORARY REVISIONS			
36 - TABLE OF CONTENTS			
36-10-00	Figure 01	2	Sep 1/2016
36-10-00	Figure 02	2	Sep 1/2016

CESSNA®  
**MODEL 208**  
ILLUSTRATED PARTS CATALOG

<u>SUBJECT</u>	<u>CHAPTER SECTION SUBJECT</u>	<u>FIGURE</u>	<u>EFFECTIVITY START</u>	<u>END</u>
PRESSURE REGULATOR - ENGINE BLEED AIR	36-10-00	01	0001 B0001	0179 B0209
PRESSURE REGULATOR - ENGINE BLEED AIR INSTALLATION	36-10-00	02	0180 B0210	& ON & ON

CESSNA®  
**MODEL 208**  
 ILLUSTRATED PARTS CATALOG

A25025



**DETAIL B**

**DETAIL A**

PRESSURE REGULATOR - ENGINE BLEED AIR  
 FIGURE 01 (SHEET 1)

26143022  
 A2614T1062  
 B26141106

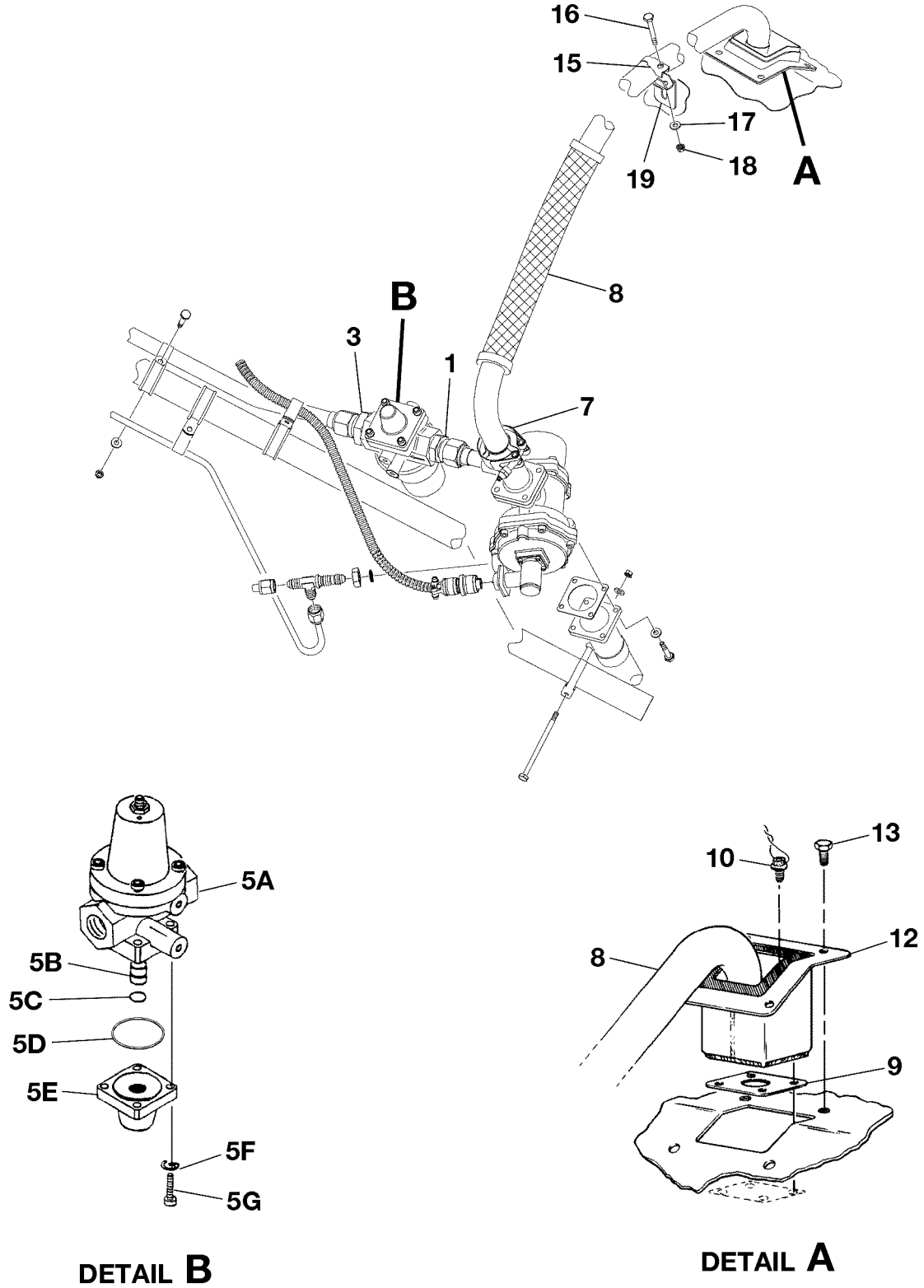
CESSNA®  
**MODEL 208**  
 ILLUSTRATED PARTS CATALOG

FIG ITEM	PART NUMBER	NOMENCLATURE	UNITS PER ASSY		
			1	2	3
01					
-		PRESSURE REGULATOR - ENGINE BLEED AIR		0001	0179
				B0001	B0209
1	82010-2	. . . REGULATOR ASSY-PRESSURE FSO SK208-70 REFER TO NOTE 1 . . . . . V09790			NP
2		. . . NOT PROCURABLE-ORDER COMPLETE REGULATOR ASSY . . . . .			RF
3	M25988/1-013	. . . O-RING . . . . .			02
4	AS3582-016	. . . O-RING . . . . .			01
5	MS35275-241	. . . SCREW . . . . .			02
6	82835	. . . SHIM FSO SK208-70 REFER TO NOTE 1 . . . . . V09790			AR
7	MS35275-242	. . . SCREW . . . . .			06
8	2650059-1	. DUCT ASSY-BLEED AIR . . . . .			01
		ATTACHING PARTS			
9	3007342	. GASKET . . . . . V00198			01
10	MS9575-05	. BOLT . . . . .			04
11	NAS1149C0432R	. WASHER . . . . .			04
		—*—			
12	2650058-5	. SEAL ASSY-BLEED AIR DUCT . . . . .			01
		ATTACHING PARTS			
13	AN3-3A	. BOLT . . . . .			04
		—*—			
- 14	2650058-3	. . SEAL . . . . .			01
15	S1601-16	. CLAMP . . . . .			01
		ATTACHING PARTS			
16	AN3-14A	. BOLT . . . . .			02 R
17	NAS1149F0363P	. WASHER . . . . .			01
18	MS21043-3	. NUT . . . . .			01
		—*—			
19	2613361-1	. BRACKET . . . . .			01

NOTE 1—REFER TO FIGURE 02 FOR LATEST CONFIGURATION

CESSNA®  
**MODEL 208**  
 ILLUSTRATED PARTS CATALOG

A25026



PRESSURE REGULATOR - ENGINE BLEED AIR INSTALLATION  
 FIGURE 02 (SHEET 1)

2614T3022A  
 A2614R1106  
 B2614R1134

**CESSNA®**  
**MODEL 208**  
**ILLUSTRATED PARTS CATALOG**

FIG ITEM	PART NUMBER	NOMENCLATURE	UNITS PER ASSY		
			1	2	3
02		PRESSURE REGULATOR - ENGINE BLEED AIR INSTALLATION			
-			0180	& ON	RF
			B0210	& ON	
1	AS5174-1010	. UNION . . . . .			01
- 2	MS9385-10	. O-RING . . . . .			01
3	AS5174D1210	. REDUCER . . . . .			01
- 4	MS9385-12	. O-RING . . . . .			01
- 4A	1H75-14	. PRESSURE REGULATOR FSO 1H75-21 . . . . .	V26433	0180	0360 NP
				B0210	B0983
- 5	1H75-21	. PRESSURE REGULATOR REFER TO NOTE 1 . . . . .	V26433	0361	& ON 01
				B0984	& ON
5A	A1-359-2	. HOUSING ASSY-UPPER . . . . .	V26433		01
5B	E6-209-1	. VALVE-POPPET . . . . .	V26433		01
5C	102A10013-05	. SEAL-QUAD . . . . .	V26433		01
5D	B3-61-8	. GASKET . . . . .	V26433		01
5E	A1-688-1	. HOUSING-LOWER . . . . .	V26433		01
5F	MS35338-138	. LOCKWASHER . . . . .	V26433		08
5G	103A10015-01	. SCREW . . . . .	V26433		08
- 6	AS3582-022	. O-RING . . . . .			04
7	24540-100	. COUPLING . . . . .	V00624		01
- 7A	57979-3	. NUT . . . . .	V98625		01 R
8	2650059-10	. DUCT ASSY . . . . .			01
		ATTACHING PARTS			
9	3007342	. GASKET . . . . .	V00198		01
10	MS9575-05	. BOLT . . . . .			04
		—*—			
- 11		. DELETED-NOT USED . . . . .			
12	2650058-5	. FLANGE SEAL ASSY- BLEED AIR DUCT . . . . .			01
		ATTACHING PARTS			
13	AN3-3A	. BOLT . . . . .			01
		—*—			
- 14	2650058-3	. COVER SEAL . . . . .			01
15	S1601-16	. CLAMP . . . . .			01
		ATTACHING PARTS			
16	AN3-14A	. BOLT . . . . .			02 R
17	NAS1149F0363P	. WASHER . . . . .			01
18	MS21043-3	. NUT . . . . .			01
		—*—			
19	2613361-1	. BRACKET . . . . .			01

NOTE 1—REFER TO THE MAINTENANCE MANUAL FOR THE SUPPLIER PUBLICATION LIST.